

DDR3 SODIMM Slot Interposer

DDR3-1600 SODIMM Digital Validation

- High Speed DDR3 Digital Validation
- Passive 204-pin SODIMM Slot Interposer
- Custom Designed for Agilent Logic Analyzers
- Compatible with Agilent Software Applications
- Acquisition up to DDR3-1600
- Supports JEDEC PC3-12800, PC3-10600, PC3-8500, and PC3-6400 DDR3 modules

Passive Interposer Design

This interposer is an extender design, does not require a dedicated SODIMM slot, and provides a quick & easy connection between your target DDR3 bus and an Agilent logic analyzer. This is a passive interposer with no added buffers to conceal system performance.

Software

This product comes with logic analyzer setup software, DDR3 protocol decode software and is fully compatible with Agilent's DDR3 Eye Finder software and Protocol Compliance & Analysis tool (B4622A).

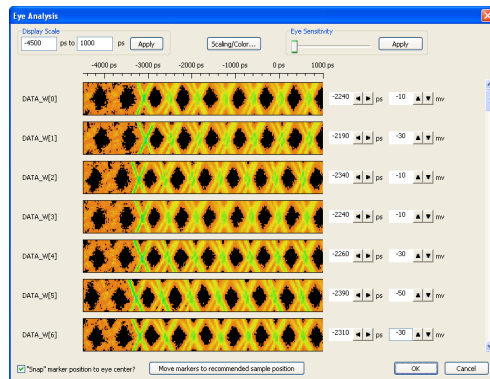
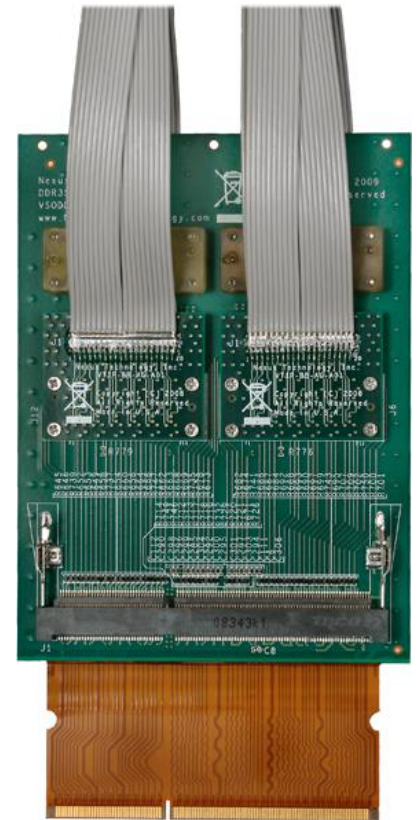


Figure 1 Full-sensitivity DDR3-1600 Eye Finder results of this interposer.

DDR3 Eye Finder Software

The Agilent DDR3 Eye Finder software (freely available from Agilent) can be used to set valid read and write data eyes for proper state acquisition of DDR3 read and write data. This tool can also be used to analyze the analog characteristics of the read and write data eyes as seen by the logic analyzer. This information can be useful when debugging physical layer issues on the DDR3 data bits (DQ data channels). All DDR3 Data Eye Finder results used in the figures of this datasheet are DDR3-1600 acquisitions using this interposer; highlighting the minimal impact this product has on the DDR3 bus and the data presented to the logic analyzer for storage & reliable analysis.

DDR3 Command & Address EyeScan

The Agilent Logic Analyzers EyeScan tool (fully integrated with the Agilent Logic Analyzer application) can be used to quickly analyze the analog characteristics of the DDR3 command and address bus. With a horizontal resolution of 5ps, EyeScan can be used to identify problem signals quickly for further investigation with an oscilloscope. Results can be viewed for each individual signal or as a composite of multiple signals or buses. All Eye Scan results in this datasheet are DDR3-1600 command/address acquisitions using this interposer.

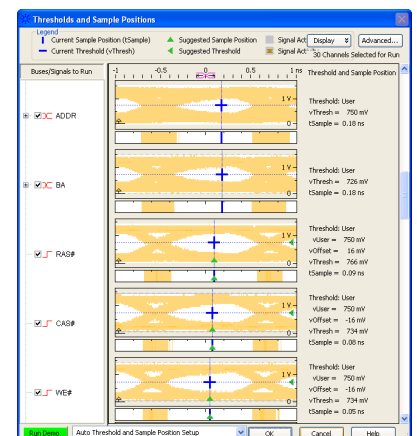


Figure 2 DDR3-1600 EyeScan results of this interposer.

DDR3 Protocol Compliance & Analysis

The Agilent DDR3 Protocol Compliance & Analysis tool (Agilent product B4622A, available for purchase separately) enables automated measurement of deep DDR3 bus traces to help identify protocol problem areas and give an overview of the system performance.

- Automates DDR3 protocol compliance
- Quickly identifies protocol violations and timing errors
- Allows user defined timing parameters
- Provides test results in HTML format
- Provides quick overview of DDR3 bus performance
- Enables fast trigger setup

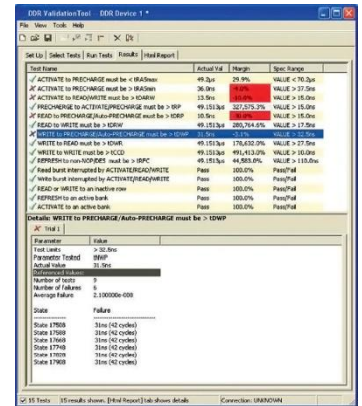


Figure 3 DDR3 Protocol Compliance & Analysis

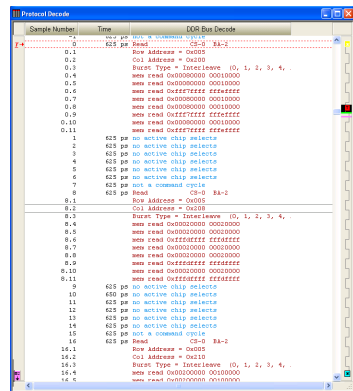


Figure 4 DDR3-1600 Bus Decode of this interposer.

DDR3 Protocol Decode

The NT-DDR3-DECODE memory bus decoder (included with this product) integrates with the Agilent Logic Analyzer software and sets up the logic analyzer and decodes the acquired data in a standard listing window. This allows for easy analysis of the DDR3 protocol, addressing, and read/write data from the DDR3 bus. This product also supports the Agilent memory bus decoder (B4621A, available for purchase from Agilent).

- Handles any read or write offsets (latencies)
- Burst lengths of 4, 8, or On-The-Fly
- Data Masking
- Read and Write data decoding

DDR3-1600 Command/Address Acquisition

This interposer provides excellent signal fidelity at speeds up to DDR-1600, as seen in the scans of the command and address using this interposer. Note the large valid data eyes in the figures below.

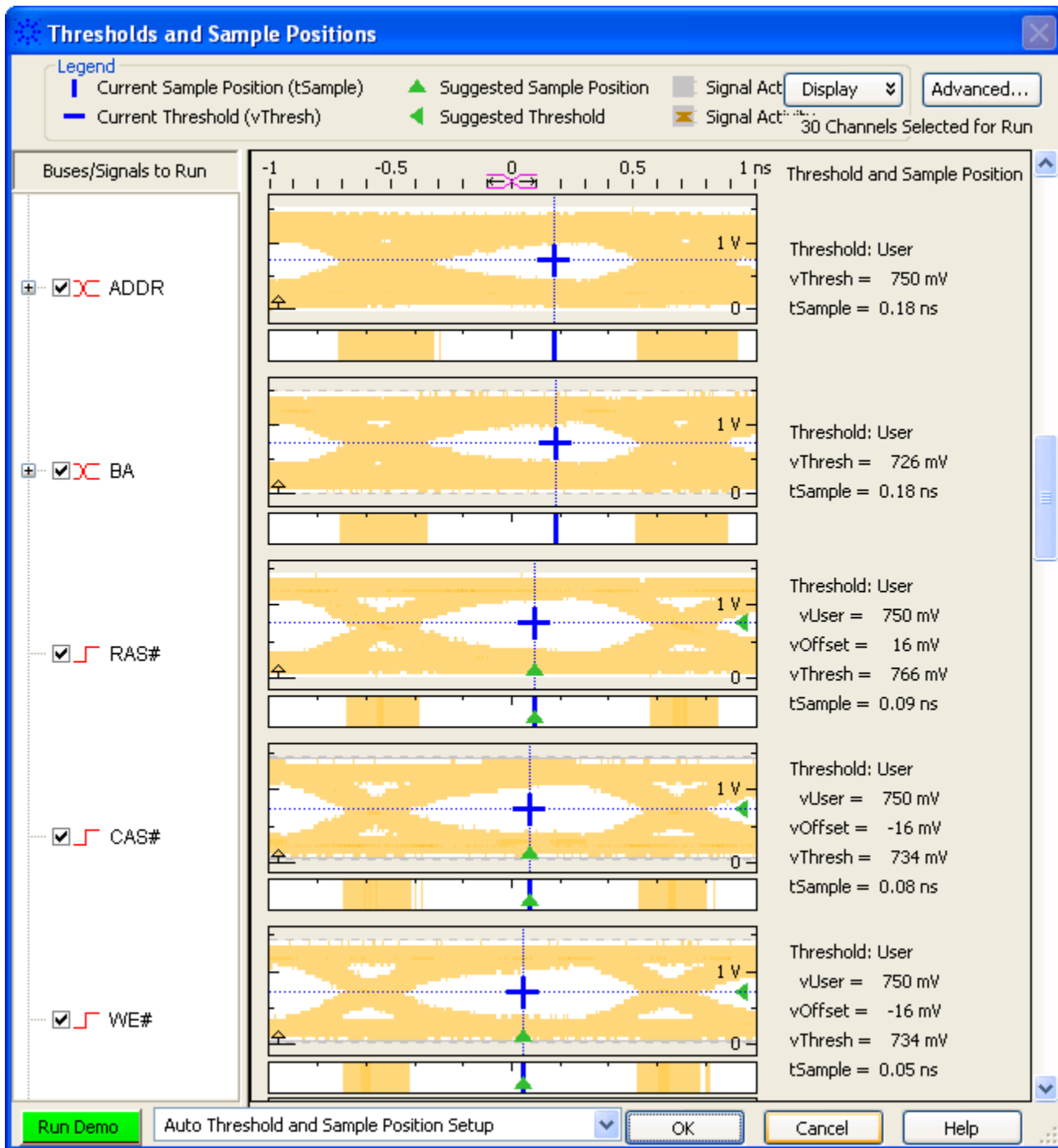


Figure 5 DDR3-1600 Eye Scan results of this interposer

DDR3-1600 Read & Write Data Eye Acquisition

This interposer also provides excellent signal fidelity for the read and write data as seen in the DDR3 Eye Finder figure below. These results are from a DDR3-1600 bus using this interposer. Note the large valid data eyes for the write data.

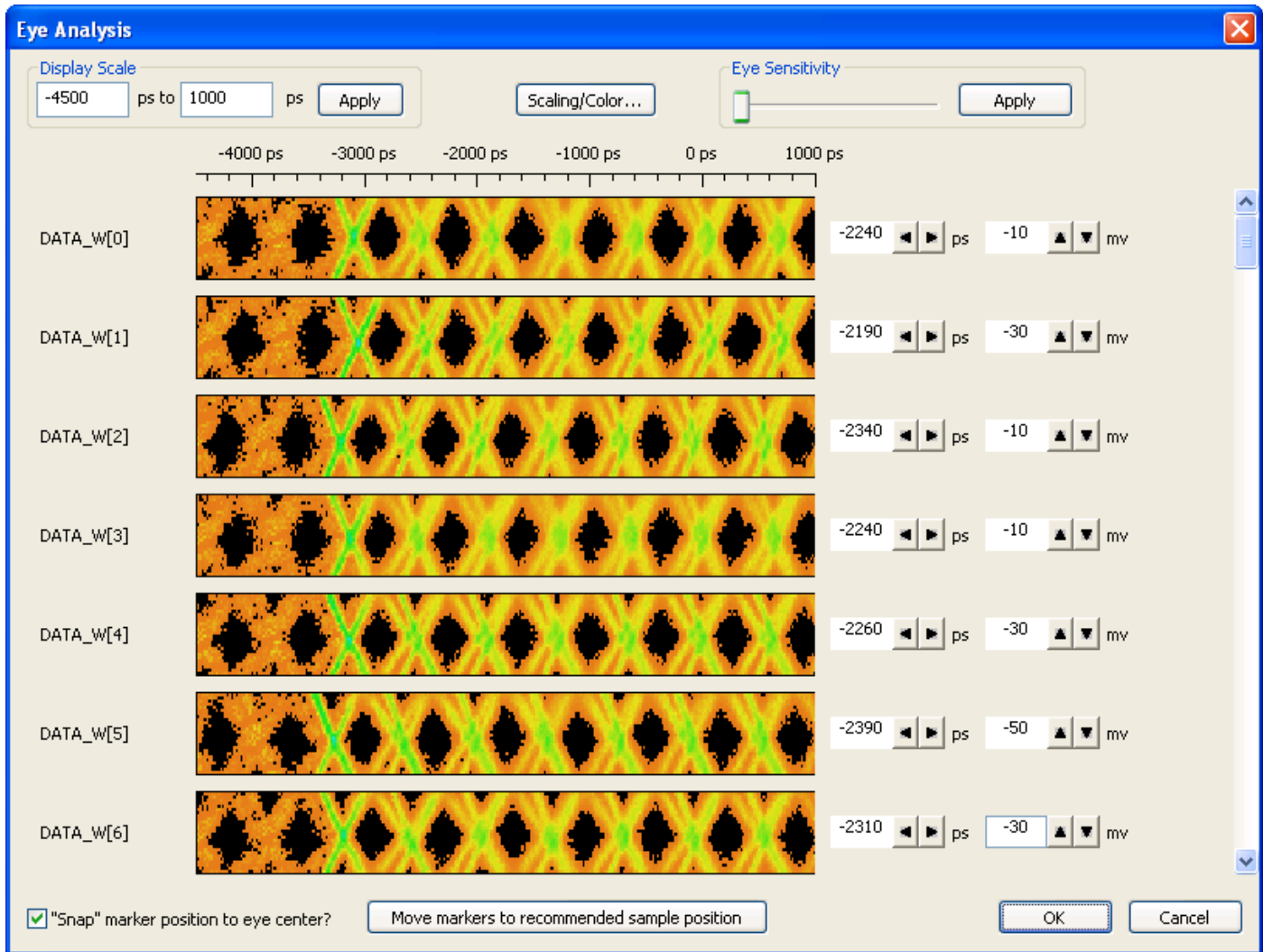


Figure 6 Full-sensitivity DDR3-1600 Write Data Eye Finder results of this interposer.

Similarly, note the large valid data eye results for DDR3-1600 read data.

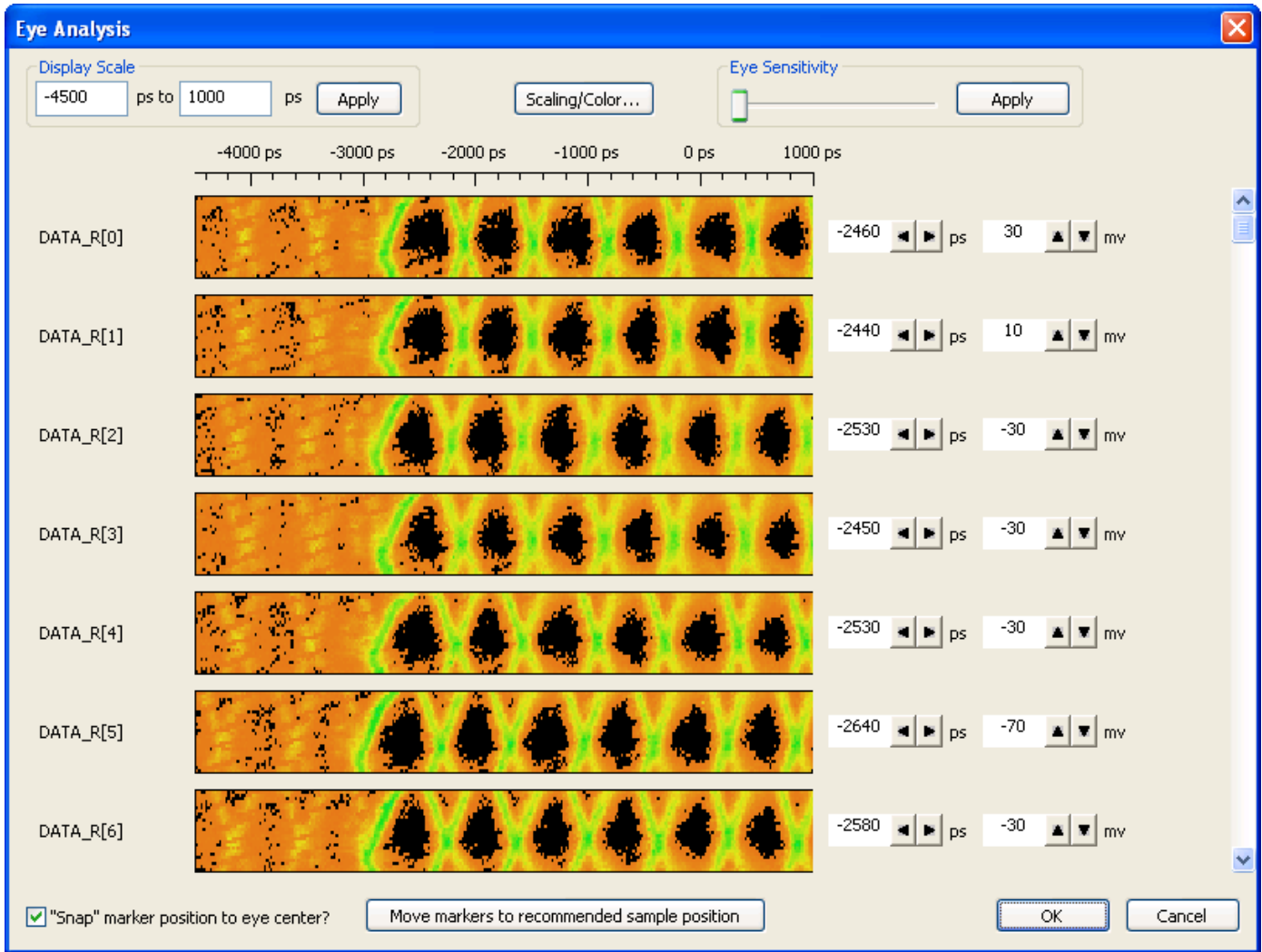


Figure 7 Full-sensitivity DDR3-1600 Read Data Eye Finder results of this interposer.

DDR3-1600 Bus Decode

The high fidelity of the signals, as seen in the previous sections, allows for very accurate state acquisition. This accuracy is critical for digital validation of DDR3, minimizing the time spent validating the connection and setup, and maximizing the time spent validating the target DDR3 bus.

The state acquisition and bus decode below are from a DDR3-1600 bus using this interposer. Note the timestamp values indicating DDR3-1600 acquisition. Also note the repeating data patterns in the burst data.

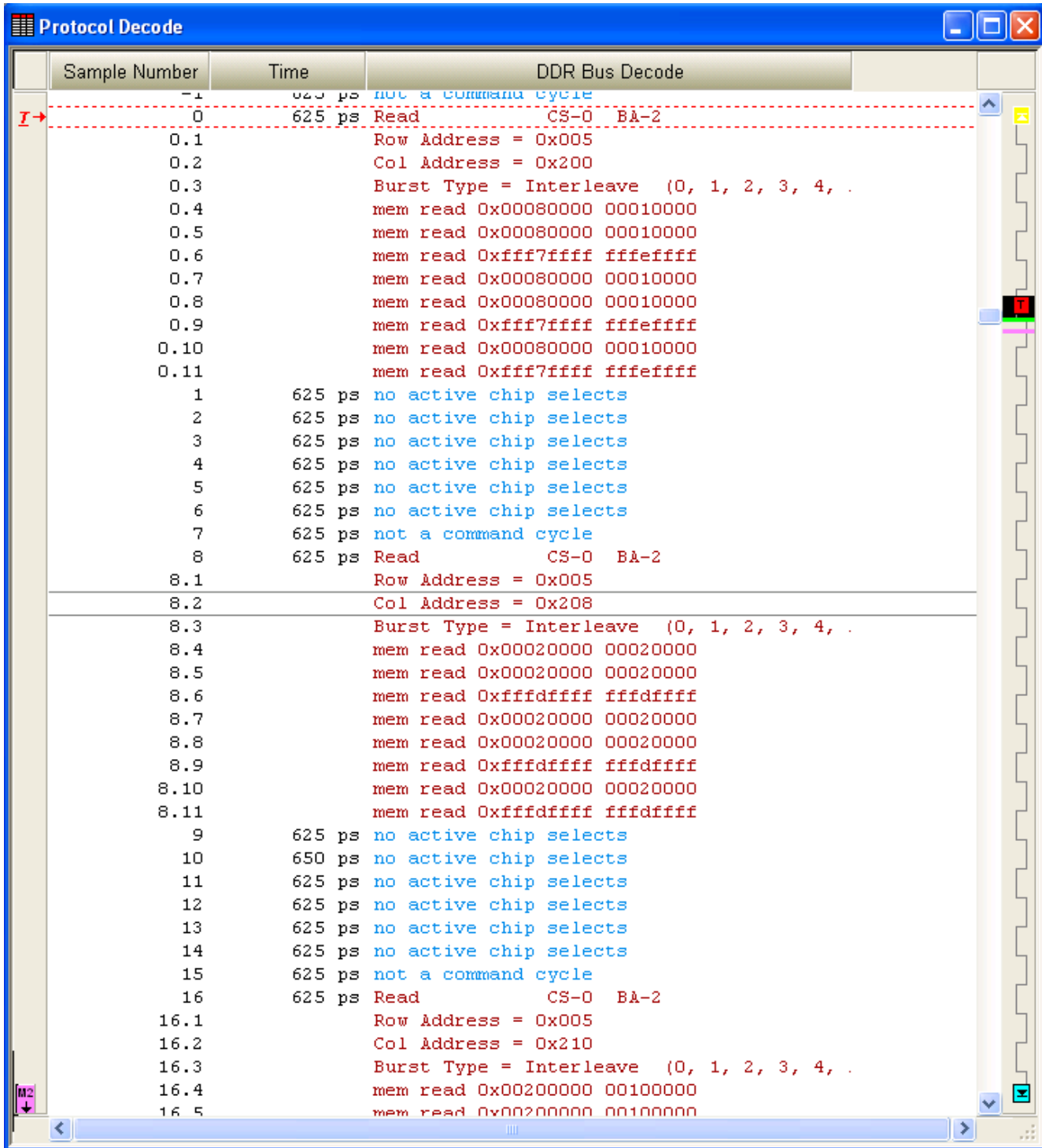


Figure 8 DDR3-1600 Bus Decode of this interposer.

DDR3 SODIMM Slot Interposer

NT-DDR3SOIHS Technical Specification

General

Specification	Detail
Interface Type	Passive Interposer
LA Interface	Passive leash to Agilent modules.
JEDEC Module Type	DDR3 SDRAM Unbuffered SODIMM (reverse or standard connectors)
JEDEC Modules Supported	PC3-12800, PC3-10600, PC3-8500, PC3-6400
DDR3 Data Rates Supported (MT/s)	1600, 1333, 1067, 800
Min. Clock Edge-to-Edge	500ps
Min. Voltage Swing	200mV
Min. Eye Width	200ps

Agilent Hardware

Specification	Detail	Quantity
Logic Analyzer Mainframe	16902B	1
Logic Analyzer Module(s)	16962A	4 ¹
Logic Analyzer Probes	None needed.	

Supported Software

Specification	Detail	Supported
Agilent Logic Analyzer S/W	03.82.1024 or newer	Yes
Agilent DDR3 Eye Finder		Yes
Agilent B4622A	Agilent Protocol Compliance & Analysis	Yes ²
Agilent B4621A	Agilent Memory Bus Decoder	Yes ²
Nexus NT-DDR3-DECODE	Nexus Memory Bus Decoder	Yes

DDR3 Signals Probed

Specification	Detail
Command	RAS#, CAS#, WE#, CKE0, CKE1, RESET#, ODT0, ODT1
Addressing	CS0#, CS1#, A00-A15, BA0-BA2
Data Strokes	DQS0-DQS7
Data Bits	DQ00-DQ63
Data Masks	DM0-DM7

Product Configurations

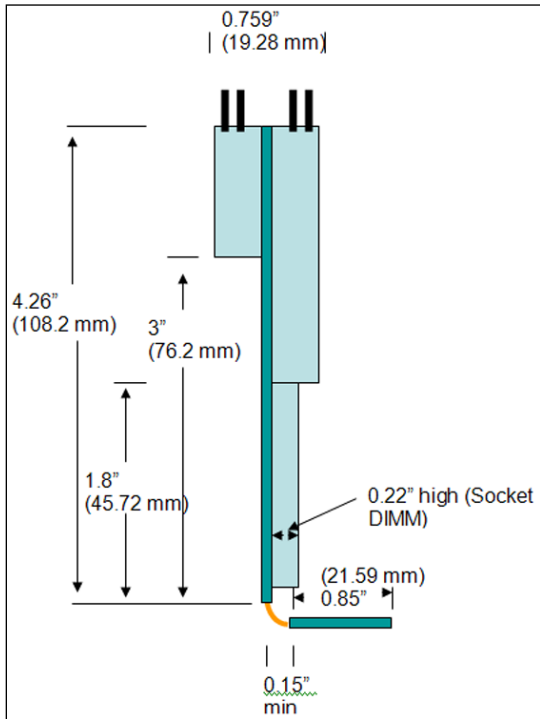
Nomenclature	Detail
NT-DDR3SOIHS(-LSH)	1- DDR3-1600 SODIMM Slot Interposer 1- NT-DDR3-DECODE DDR3 Memory Bus Decoder SW License

Notes

1: Only one 16962A module is needed for DDR3 protocol analysis (DDR3 command & address acquisition). Four modules are needed for DDR3 command, address, read, and write data acquisition.

2: This product is fully supported and is available for purchase separately from Agilent.

Product Keep-Out Volume



Further Information

Please contact us by telephone, email or mail as listed below. Normal business hours are 9:00 – 5:00 EST.

Web www.nexustesttechnology.com
Telephone 877.255.8388
Fax 877.255.8388
Address 78 Northeastern Blvd. Unit 2 Nashua, NH 03062
Email support@nexustesttechnology.com

